

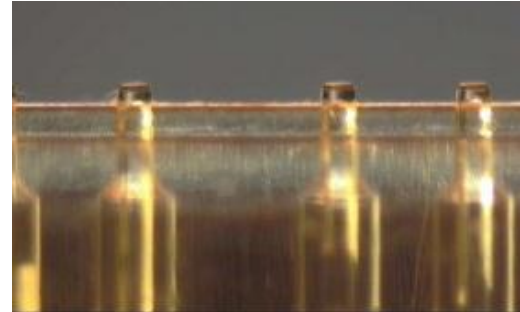


Laser Micromachining Applications Card

Global growth in the demand to move ever increasing amounts of data quickly, is fuelling the development of the optical data communications network. This demand is made up of a range of data files from our personal text messages to the latest high definition blockbuster movie.

The use of high speed optical data connections delivers a significant increase in transfer speeds and greater capacity for large data files. This in turn is driving demand for a new generation of optical cables and connectors.

OpTek's LaserCleave™ technology is key to delivering the high quality optical terminations required for the production of these parts.



LaserCleave™ – Optical fibre termination for optical HDMI