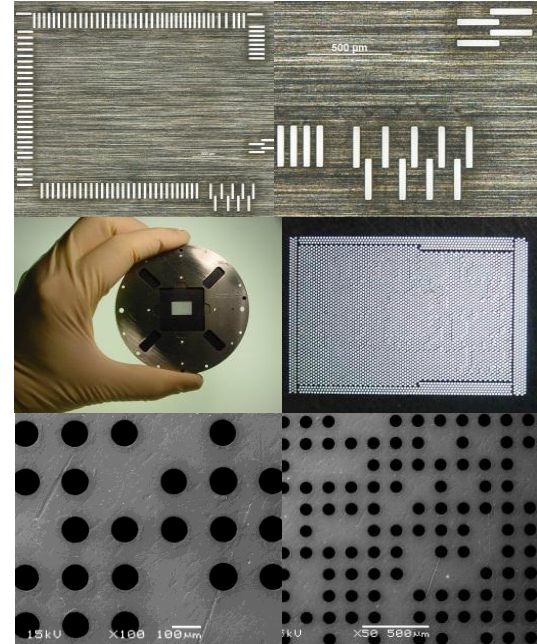


Laser Micromachining Applications Card

Increasing the complexity of an IC, also increases the number test points required. Modern chips can have ~50,000 points that need to be contacted by probing pins during test, each pin needing accurate location by the guide plate in a typical probe card assembly.

Laser drilled arrays of precision micro holes down to of a few microns diameter. 50:1 or better aspect ratio, round and rectangular holes.

Extremely accurate and repeatable hole positioning go way beyond the limitations of mechanical drilling and avoid the cost, risk and delays associated with tool failures



Laser Micro-Drilling – Probe card guide plate array drilling