

# LaserCleave™-1500

Improve performance, increase yield, reduce manufacturing costs

OpTek  
SYSTEMS

**Tabletop Fiber processing tools for optical interconnect production.**

## Description

LaserCleave™ production tools from OpTek Systems are built around the technology that has been relied on in performance critical, volume production of optical fiber components since the mid 1990's.

Engineered to address the production of existing and a new generation of optical interconnects, in a compact and user friendly platform LaserCleave™ is designed to maximise productivity in connector manufacture.

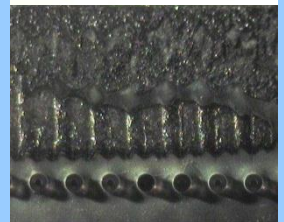
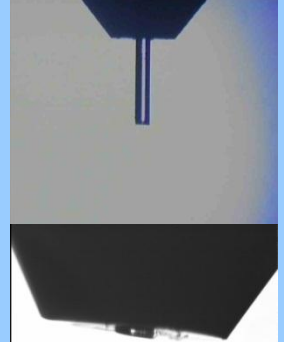
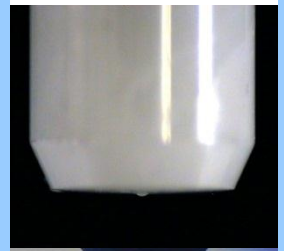


## Features

- Interchangeable fixture for a wide range of connector types.
- Rapid, non-contact process
- Cuts fiber and epoxy close to pedestal
- Accurate and repeatable cut off length or cleave position
- Control over fiber end geometry
- No core-cracks, chipping, scratching or hackle
- Minimize or eliminate post cleaving operations
- Reduced overall cost of terminations

## System Specification

- Electrical Supply: Single phase, 1.7kVA
- Cooling: Air cooled; Water cooling option
- Vision: Integrated viewing cameras
- Shards: Capacity collection >1M fiber shards
- Size (WxDxH): 756 x 505 x 245mm
- Weight: 35kg



*Solutions for precision manufacturing - To learn more contact:*

OpTek Systems

**Europe & ROW:** 12-14 Blacklands Way, Abingdon Business Park, Oxford, OX14 1DY, UK. Tel +44 1235 539182, info@opteksystems.com

**USA & Americas:** 12 Pilgrim Road, Greenville, SC 29607, USA, Tel: +1 864 272 2640, info@opteksystems.com

**Asia:** 1008, Bldg A, Dingfeng Intl. Plaza, Dongguan, Guangdong 523000, China, Tel +86 769 2302 5011, info@opteksystems.com

www.opteksystems.com